

Processing report

Eagloo

Name : 2013_2017_nuth_kaab

19 May 2022

Method of processing :

Co-registration - method : Nuth and Kääb



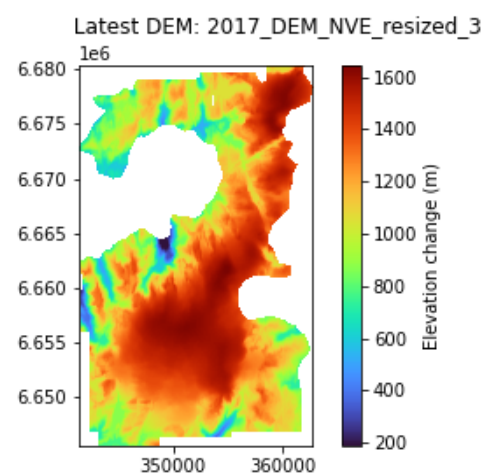
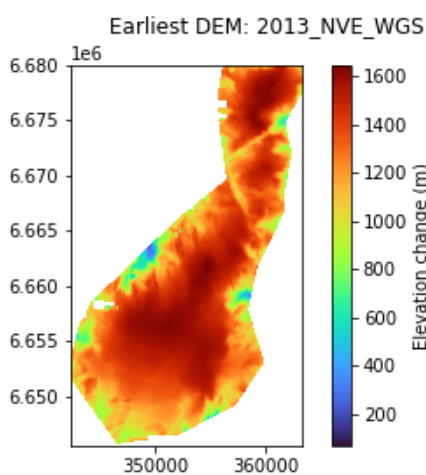
EAGLOO

DEM Modification Software

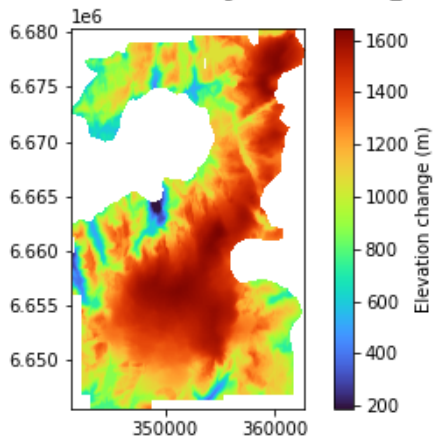
1 - Entry names

- Earliest DEM : 2013_NVE_WGS
- Latest DEM : 2017_DEM_NVE_resized_3
- Contour line shapefile of the biggest glacier(Use for masking) : Folgefonna1959_utm32
- Path where the files were saved : /home/guillaume/Eagloo/Folgefonna/test_coregistration
- Coordinate system : EPSG:32633
- Shapefile frame of the study area : frame_folgefonna
- Resolution : 10.0 m

2 - Digital Elevation Model entries



Reference DEM for the co-registration: 2017_DEM_NVE_resized_3



3 - Co-registration of the DEM: 2013_NVE_WGS

- Reference DEM for co-registration : 2017_DEM_NVE_resized_3

- Method : Nuth and Käab

Translation (sum) :

- East offset (dx) : **1.39 m**

- North offset(dy): **-0.42 m**

- Vertical offset (dz) : **0.19 m**

- Error before the co-registration(NMAD) : **1.63 m**

- Error after the co-registration(NMAD) : **1.49 m**

